

EMC Station Manager[®]

Ambient Air Quality Data Logger

Ambient Air Quality & Meteorological Monitoring



Station Manager Data Logger PC

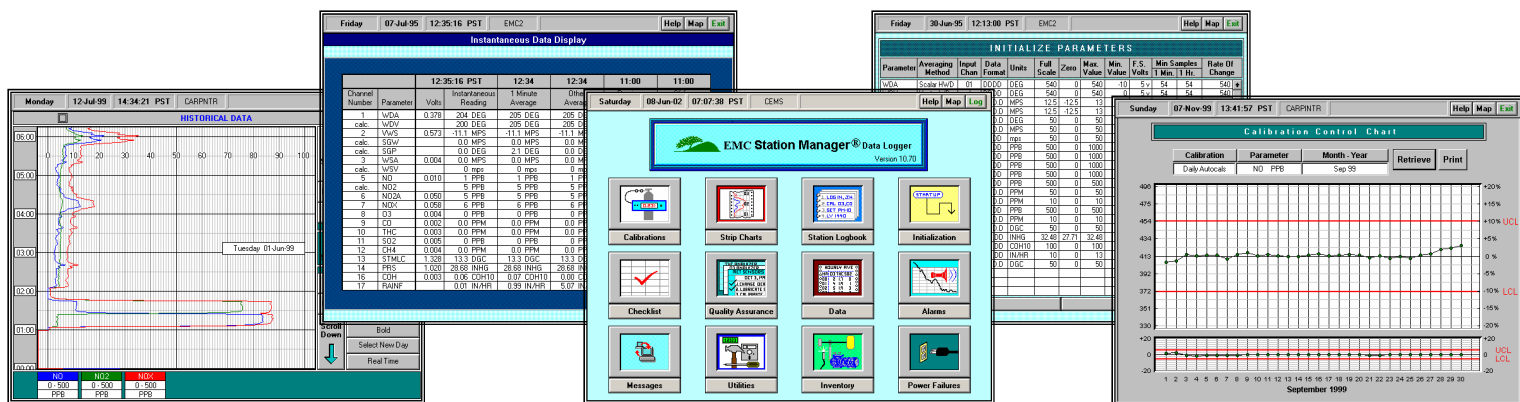
Signal Interface Unit (SIU)

Key Features

- Advanced Data Logger for Ambient Air Quality and Meteorological Monitoring
- Intuitive and Easy to Operate
- Exceptional Screen Displays and User Interface
- Large Selection of Standard Ambient Air Monitoring Data Reports
- Export Data to Microsoft Excel Spreadsheets
- Strip Chart Program
- Calibration Control Program
- Quality Assurance Programs
- Logbook and Parts Inventory Programs
- Polling through Internet, Dial-up Modems, Leased-Lines
- Voice Alarm Message
- E-Mail Alarm and Report Program

NEW

NEW



EMC Environmental Monitoring Company, Inc.

580 Linne Road #150 Paso Robles, CA 93446 USA

Telephone (805) 226-2275 • (800) 597-2037 (US toll free) • Fax (805) 226-2280

Email: sgersh@emcslo.com • Web Site: www.emcslo.com



Specifications

- **Station Manager PC:** Low Cost Dell, Gateway, IBM, or HP PC, or Industrial Rack-Mount PC
- **PC Specifications:** 2.0 GHz Celeron, 128 MB RAM, 40 GB Drive, CD-ROM, 15" Monitor, Microsoft Windows 2000
- **Hardware Signal Interface:** Advantech "ADAM" Signal Interface Unit (SIU) or RS-232C Serial Interface to Analyzers
- **ADAM SIU Interface:** RS-232C, RS-485C, or Ethernet (TCP-IP)
- **ADAM 4-Slot SIU Dimensions:** 9.3" L x 4.3" W x 2.9" H (231mm x 110mm x 75mm), 1.7 lbs (3.7 kg)
- **ADAM 8-Slot SIU Dimensions:** 13.9" L x 4.3" W x 2.9" H (355mm x 110mm x 75mm), 2.6 lbs (5.7 kg)
- **ADAM SIU Interface:** RS-232C Serial Cable, RS-485C 2-Wire Data Bus, or Ethernet (TCP-IP)
- **Analyzer Interface:** Voltage, Current Loop, or RS-232C
- **RS-232C to Analyzers:** TEI, API, Monitor Labs, Siemens, and Other Analyzers
- **Analog Signal Inputs:** Voltage: 0-1, 0-5, 0-10 vdc Current Loop: 0-20 ma or 4-20 ma
- **Analog Signal Resolution:** 16-Bit Analog to Digital (A/D) Converter
- **Analog Inputs:** 8, 16, 24, or 32 Differential Analog Inputs
- **Digital Inputs:** 8, 16, 24, or 32 Optically Isolated Digital Inputs
- **Relay Outputs:** 8, 16, 24, or 32 Relay Outputs

Call Factory For Further Information

Monthly Exceedance Report

Station:	CEMS	1-Hr Average/High Threshold:	415 PPM	Daily Sum of 1-Hr Average/Low Threshold:	100 PPM
Parameter:	SO ₂ (ppm)	4-Hr Average/High Threshold:	215 PPM	Daily Average of 1-Hr Average/High Threshold:	815 PPM
Date:	June 2001	Daily Sum of 1-Hr Average/High Threshold:	210 PPM	Daily Average of 1-Hr Average/Low Threshold:	200 PPM

Daily Calibration Summary

Parameter	Sample Time	Calibration Mode	Calibration Value	Unit	Span Value	Analyzer Response Factor	Span % Error	Span	Size
OPA	0519	Auto	Baro	101.3	-0.1	-0.1	-0.04		
OS2	0541	Auto	Open	-1.28					
NO	0552	Auto	Baro	-0.24					
NO2	0541	Auto	Open	-0.24					
CO2	0519	Auto	Baro	-0.24					
CO2	0541	Auto	Open	-0.24					

Quarterly Opacity Report

Station:	NE-01	Quarter:	January - March			
Parameter:	Opac	Year:	2001			
Exceedance Summary:	There were no hours (75 consecutive) of the Clock-Hour Opacity Standard and zero (0) exceedances of the Instantaneous Opacity Standard during the quarter.					
Exceedance	Hour	Duration	Clock-Hour Average	Std	2-Hr Average	Std
P1	17 Jan 2001	15:00	0.0000	0.00	0.00	0.00
P2	19 Jan 2001	06:00	0.0000	0.00	0.00	0.00
P3	20 Jan 2001	06:00	0.0000	0.00	0.00	0.00
P4	26 Jan 2001	06:00	0.0000	0.00	0.00	0.00
P5	28 Jan 2001	06:00	0.0000	0.00	0.00	0.00
P6	30 Jan 2001	20:00	0.0000	0.00	0.00	0.00
P7	17 Feb 2001	17:00	0.0000	0.00	0.00	0.00

Station Manager Data Logger

Station Manager PC

SIU

Station Manager Data Logger

Printer

Modem

Analizers

Ambient Air Monitoring Data Reports

Ambient Air Monitoring Station

Station Manager and System Manger are registered trademarks of EMC. All products and company names are trademarks of their respective companies.

