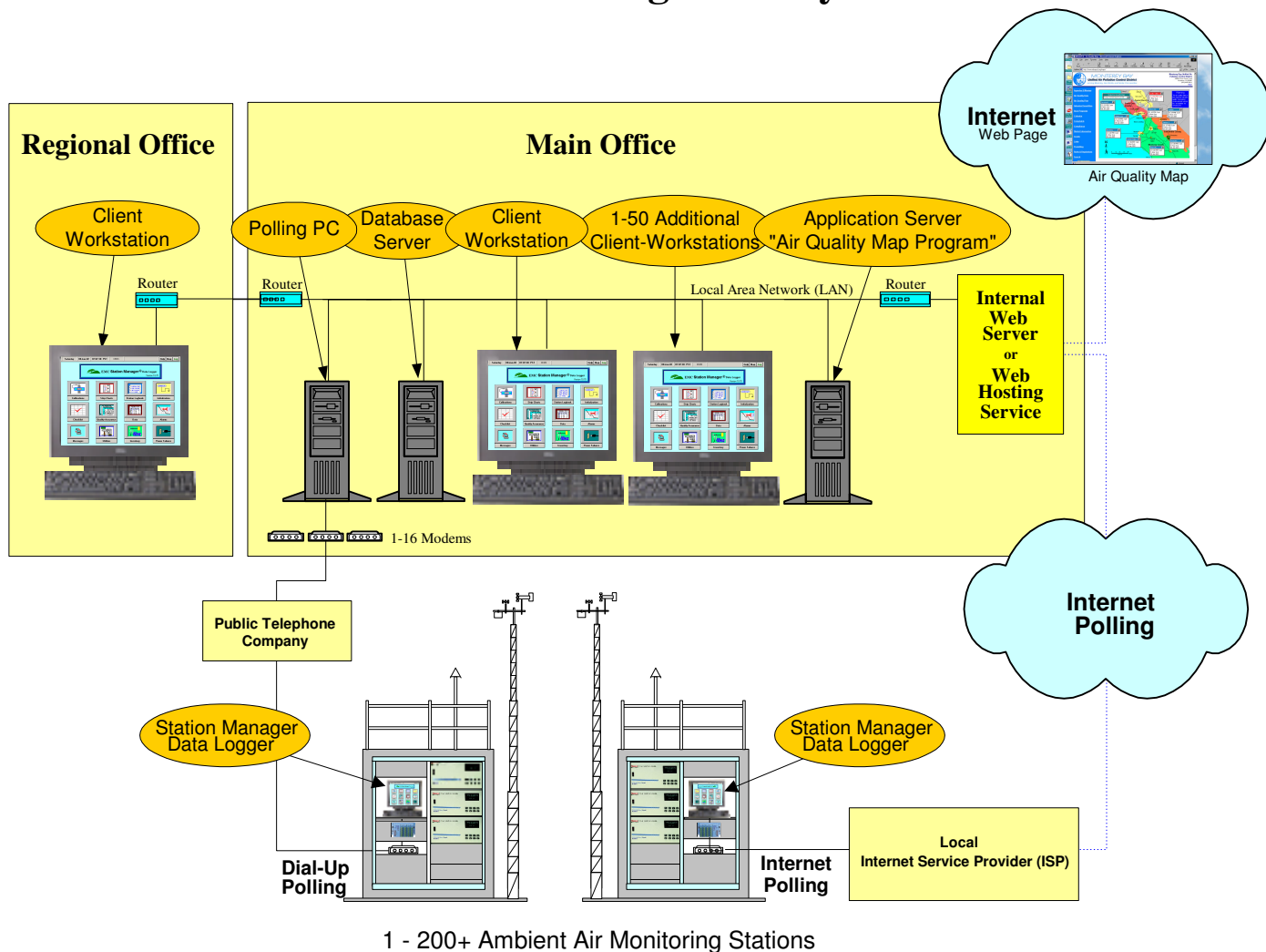


EMC System Manager[®]

Ambient Air Monitoring

Central Data Management System



1 - 200+ Ambient Air Monitoring Stations

Key Features

- System Manager is used to Manage Ambient Air Quality Monitoring Networks
- Polls EMC Station Manager data loggers, other data loggers brands, and PM samplers
- Polls through the Internet, Dial-up Modems, Leased Lines, or Spread-Spectrum Radios
- Extensive Selection of Standard Ambient Air Quality Data Reports
- Data Editor, AIRS Generation, QA Programs, Alarms, and Strip Charts
- US EPA AIRNow Module for O₃ and PM-2.5 Data
- Air Quality Map program for Publishing Data to Internet Web site
- Database can be Microsoft SQL Server®, Access®, or Oracle®



EMC Environmental Monitoring Company, Inc.

580 Linne Rd. #150, Paso Robles, CA 93446 USA

Telephone (805) 226-2275 • (800) 597-2037 (US toll free) • Fax (805) 226-2280

Email: sgersh@emcslo.com • Web Site: www.emcslo.com

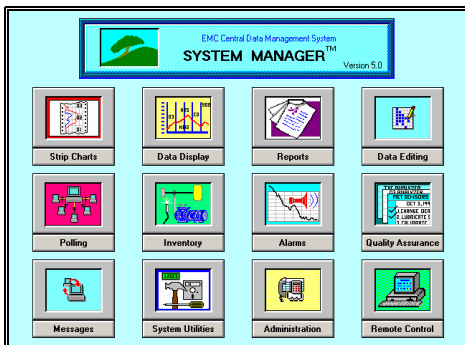


Specifications

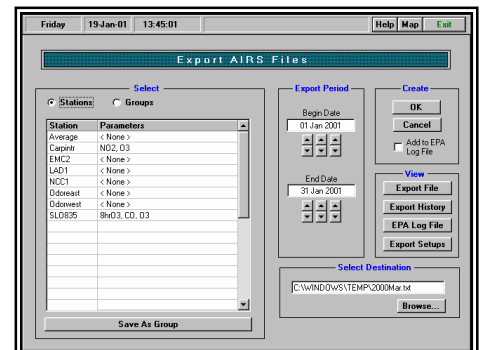
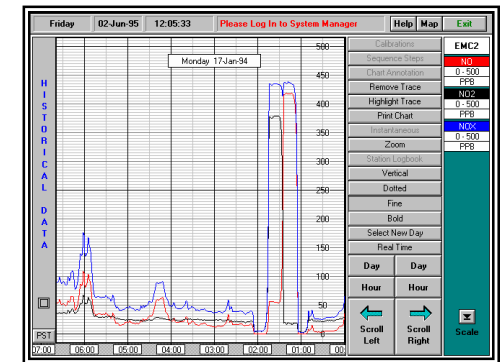
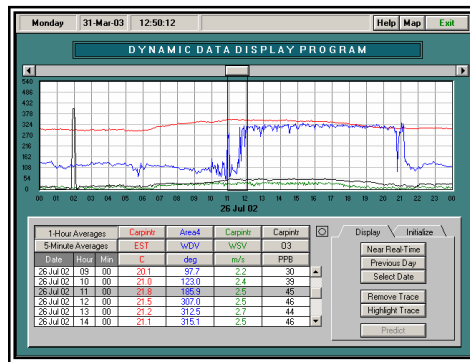
- **Configuration:** System Manager operates on a LAN, WAN, or Stand-Alone PC
- **Client-Workstation PC:** Intel Pentium, 128-256 MB RAM, Windows 98, 2000, XP, 17-19" Monitor
- **Database Server:** Intel Pentium, 2 GHz, 512 MB RAM, 40-160 GB Hard Disk, Windows 2000/2003
- **Polling PC:** Intel Pentium PC, 256 MB RAM, Windows 2000, XP
- **Application Server:** Intel Pentium PC, 256 MB RAM, Windows 2000, XP
- **Modems:** US Robotics external 56 KB Modem or equivalent
- **Printers:** Standard Windows Printers
- **Data Backup:** Standard Tape Backup Systems, CD-RW, or DVD
- **Database Programs:** Microsoft SQL Server 2000, Oracle 8i, 9i, or PostGre SQL
- **Windows Compatible Database:** Oracle 8i, 9i, Microsoft SQL Server 2000
- **Linux Compatible Database:** Oracle 8i, 9i, PostGre SQL

System Manager Screen Displays

System Manager offers an extensive range of features and capabilities for operation and management of Ambient Air Quality Monitoring Networks. The following screens illustrate the exceptional user interface in System Manager.



Select Date	Area4	Caprinb	Canoga	LAD1	NEC1	Caprinb	LAD1	LAD1
Time	PPB	CO	PPB	ATM	ATM	CO	WDA	WSA
31 Mar 2003 10:00	0.00	45	51.5	25.14	21.40	26.4	72.6	2.2
09:00	0.00	38	30.4	22.84	20.68	73.8	81.7	2.4
08:00	0.00	39	30.3	19.78	19.15	109.3	71.4	1.6
07:00	0.00	29	29.9	15.86	17.71	102.0	89.9	0.8
06:00	0.00	34	27.4	11.55	16.54	52.4	229.2	2.5
05:00	0.00	36	10.8	11.99	16.25	83.7	227.8	3.3
04:00	0.00	35	23.0	12.47	15.96	48.0	335.9	3.4
03:00	0.00	34	17.4	13.14	15.94	45.8	210.1	3.0
02:00	0.00	39	13.7	13.78	16.33	72.1	199.7	1.6
01:00	0.00	405 c	38.9	14.32	16.89	77.6	236.3	2.3
00:00	0.00	39	26.5	14.59	16.50	72.3	236.7	3.7
30 Mar 2003 23:00	0.00	39	47.6	15.07	16.93	65.1	235.4	3.6
22:00	0.00	41	56.8	16.71	16.50	53.6	237.6	3.8
21:00	0.00	41	20.7	17.27	17.28	77.9	246.4	3.9
20:00	0.00	41	48.3	17.47	17.33	71.8	240.7	3.7
19:00	0.00	41	53.5	19.98	17.27	78.4	249.5	2.7
18:00	0.00	42	15.7	24.36	17.78	42.9	35.3	2.3
17:00	0.00	50	15.1	26.81	19.25	47.6	40.0	3.5
16:00	0.00	58	16.7	27.66	20.93	60.6	43.9	3.7
15:00	0.00	58	16.2	27.84	21.50	27.6	34.6	3.6
14:00	0.00	59	17.6	27.77	21.29	19.4	43.5	3.2
13:00	0.00	60	45.0	26.80	20.97	22.9	36.9	2.5
12:00	0.00	58	44.6	25.87	20.32	17.4	87.8	2.1
11:00	0.00	58	16.7	24.12	19.36	17.5	352.5	2.8

Call Factory For Further Information

System Manger is a registered trademark of EMC. All products and company names are trademarks of their respective companies

